

Power & Energy Loggers PEL 100 Series

Models PEL 102, PEL 103 & PEL 105

All You Need For Power & Energy Logging

**Compact
Economical
Simple To Use**

- Simple to use, single-, dual- (split-phase) and three-phase (Y, Δ) power and energy loggers
- Works on 50, 60 and 400Hz networks
- Designed to work in 1000V CAT III and 600V CAT IV environments
- Power measurements: VA, W and var
- Energy measurements: VAh, Wh (source, load) and varh (4 quadrants)
- Time of use costs recorded
- DataView[®] software for data storage, real-time display, analysis and report generation with supplied pre-defined or custom templates
- Minimal setup required
- Ethernet compatible
- Bluetooth Class 1 wireless communication up to 300 ft away, line of site
- USB and Ethernet communication also built in
- Satisfies the recommendations of NEC 220.87

PEL 105 Also Includes:

- Waterproof (IP67 rating) designed for outdoor use
- Wi-Fi communication
- Powered from phase inputs up to 1000 V_{AC}
- DC voltage measurements from 10V to 1000V_{DC}
- Selectable storage rates of 1 sec or 200 ms
- Pole mountable
- Waterproof flexible current sensors
- Current measurement up to 10,000A_{AC} (sensor dependent)

Our products are backed by over 130 years of experience in test and measurement equipment, and encompass the latest international standards for quality and safety.

Technical Hotline: (800) 343-1391
www.aemc.com

 **AEMC[®]**
INSTRUMENTS
CHAUVIN ARNOUX GROUP

MODELS PEL 102, PEL 103 & PEL 105

Monitor your power & energy usage and costs locally or from anywhere in the world!

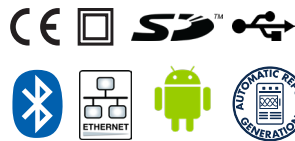


For PEL 105:



With Case Closed

For entire PEL Series:



▼ FEATURES

- Simple to use, single-, dual- (split-phase) and three-phase (Y, Δ) power & energy loggers
- Designed to work in many distribution panels (PEL 102 and PEL 103)
- 1000V CAT III and 600V CAT IV (PEL 102 and PEL 103) / 1000V CAT IV (PEL 105)
- Power measurements: VA, W and var
- Energy measurements: VAh, Wh (source, load) and varh (quadrant indication)
- Updated features in DataView® software for configuring real-time communication with a PC and report generation with pre-defined or user defined templates
- Wi-Fi communication (PEL 105)
- USB, LAN, Ethernet and Bluetooth (Class 1 wireless communication, up to 300 ft away)
- Minimal programming required
- PEL 103 & PEL 105 can be configured from front panel, all models can be configured through the DataView® control panel or the FREE Android™ App
- Satisfies the recommendations of NEC Code 220.87
- AC/DC Current Probe, Model J93, is available for measuring current up to 5000Adc & 3500Aac
- Power adapter allows the PEL 102 and PEL 103 to be powered from a phase measurement input
- Provides all the necessary functions for power and energy data logging for 50Hz, 60Hz, 400Hz and DC distribution systems
- Automatic recognition of the connected current sensors/probes
- PEL 105 can be powered directly from AC phase measurement

DESCRIPTION	CATALOG NO.
Power & Energy Logger Model PEL 102 (no LCD w/3 MA193-10-BK Sensors)	2137.51
Power & Energy Logger Model PEL 103 (with LCD w/3 MA193-10-BK Sensors).....	2137.52
Power & Energy Logger Model PEL 105 w/o Sensors (Waterproof IP67)	2137.57
Power & Energy Logger Model PEL 105 w/4 196A-24-BK (AmpFlex® - Waterproof IP67)	2137.59
Power & Energy Logger Model PEL 102 (no LCD or Sensors)	2137.61
Power & Energy Logger Model PEL 103 (with LCD, no Sensors)	2137.62
Other current probes are available (see page 11)	

▼ APPLICATIONS

- Measure efficiency, find areas for potential savings
- Track sub-billing occupants for energy costs
- Assign energy costs to departments or operations within a department
- Track peak demand periods and find opportunities for surcharge reductions
- Determine present capacity and circumvent unnecessary electrical expansion costs
- Monitor stray voltages and neutral current
- Verify the reliability and operation of electrical machinery
- Improve response time to solve power related problems
- Track energy availability and reliability of supply
- Reduce field service time at sub-stations
- Baseline studies for system upgrades in high-rise and office buildings
- Remote configurations, monitoring and event loading

**Great For Outdoor Use...
Waterproof PEL 105**



Optional accessory brackets allow the PEL 105 to be pole mounted.

▼ PRODUCTS INCLUDE

PEL 102 & PEL 103

Small classic tool bag, 5 ft USB cable, four black voltage leads and alligator clips, US power cord, 12 color-coded input ID markers, MultiFix mounting system, safety card for the PEL, sensor compliance sheet, SD-card with USB SD-card reader, quick start user guide and USB stick supplied with DataView® software and user manual.



PEL 105

Extra-large tool bag, accessory pouch, 5 ft USB cable, five 10 ft. black voltage leads (waterproof cap) with alligator clips, power adapter 110/230V with US power cord, four water-tight AmpFlex® 196A-24-BK (included with Cat #2137.59 only), 9.6V NiMH battery, 12 color-coded input ID markers, SD-card (8GB), USB SD-card reader, quick start user guide, and a USB stick supplied with DataView® software and user manual.
PEL 105 without sensors
Cat. #2137.57



Optional sensors, MA193-10-BK (Cat. #2140.48), are only included with:
Cat. #2137.51 (PEL 102)
Cat. #2137.52 (PEL 103)

▼ OPTIONAL ACCESSORIES



Cable Reeling Box for Organizing Leads Less Than 10 ft.
Cat. #5000.77



PEL 105 Pole Mounting Kit
Cat. #2137.82

Strapping not included

ADDITIONAL FEATURES: PEL 102, PEL 103 & PEL 105

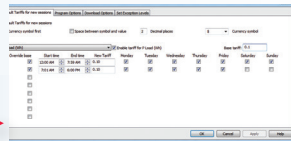


- Configure measurements and recordings
- Display data in real-time
- For use on any device with an Android platform

Android is a trademark of Google Inc. The Android robot is reproduced or modified from work created and shared by Google and used according to terms described in the Creative Commons 3.0 Attribution License.

▼ POWER ADAPTER For Use With PEL 102 & PEL 103

Power adapter connected to the PEL 103



- Powers from phase to neutral (110 to 277VAC) or phase to phase (110 to 480VAC)



Power to Phase adapter accessory
Cat. #2137.90

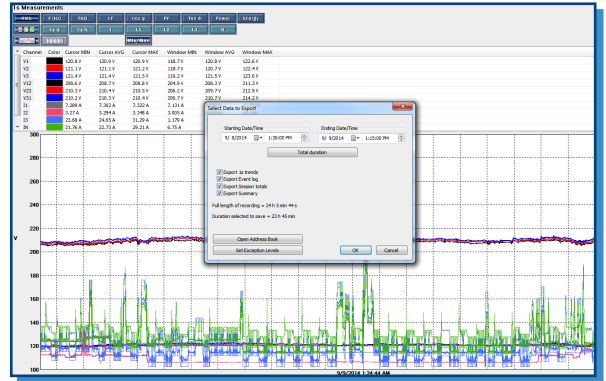
▼ HALL EFFECT AC/DC CURRENT PROBE

- Measures DC current up to 5000A

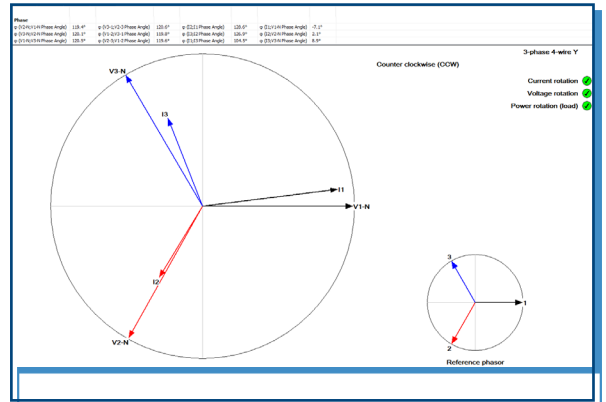


Optional accessory
Model J93
Cat. #2140.49

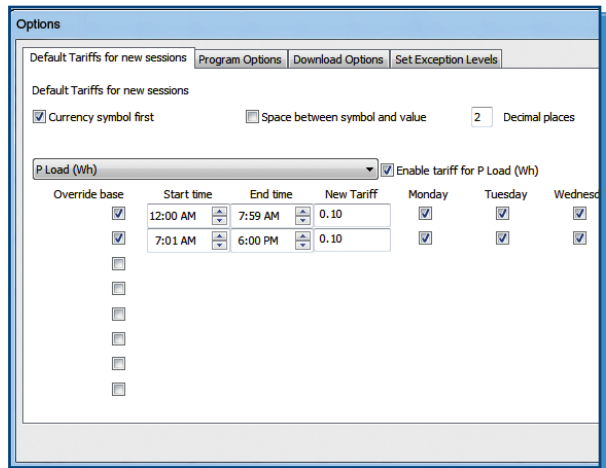
THE PEL 103 & PEL 105 have the ability to be configured directly from the front panel, DataView® control panel or the Android App.



Export User Selectable 1 Sec or 200mS Data:
Ability to create DataView® reports from 1 sec data, as well as aggregate data



Phasor Diagram Screen: Shows actual and reference diagrams and indicates whether voltage, current and/or power phase orientations are as expected



Time of Use Selection: Ability to program up to 8 different tariffs for energy cost based on day of week and time of day

► SPECIFICATIONS

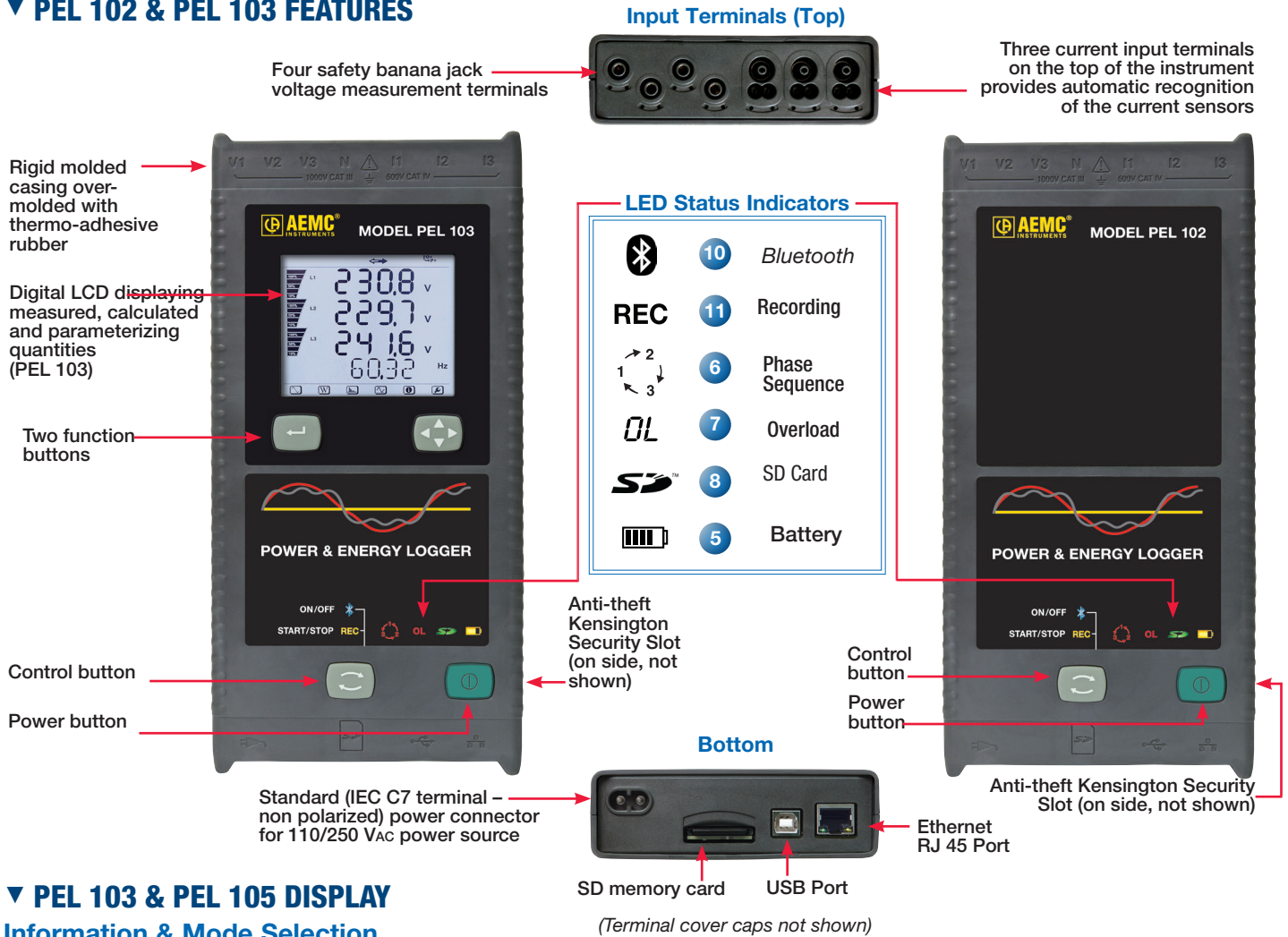
MODELS PEL 102 / PEL 103 / PEL 105

GENERAL			
Sampling Frequency	128 samples per cycle; 50/60Hz (16 samples/cycle 400Hz)		
Data Storage Rate	1 per second (200ms also available on PEL 105)		
Demand Period Storage Rate	User selectable (1, 2, 3, 4, 5, 6, 10, 12, 15, 20, 30 and 60 minutes)		
Recorded Parameters (Single- and Poly-Phase)	V, I, W, VA, var, PF, Tan, Wh, VAh, varh, THD (V and I), Individual harmonics (from 1 through 50 per phase); Crest Factor (CF), Cos ϕ / DPF		
Event Log	Tracks and records status changes and error messages along with recorded data		
Front Panel Indicator LEDs	Bluetooth active, recording in progress, phase connection reversal, overload, battery charging and SD Card status		
Storage Capacity	SD card included / SD cards up to 32 GB formatted FAT32 are supported		
Inputs	Voltage	PEL 102/103: 4 input channels; PEL 105: 5 input channels via 4mm safety banana jacks	
	Current	PEL 102/103: 3 current input channels ; PEL 105: 4 input channels via custom 4 pin jacks that accept AEMC [®] probes and sensors	
ELECTRICAL			
VOLTAGE MEASUREMENT	PEL 102/103 RANGE	PEL 105 RANGE	RESOLUTION/ACCURACY*
50/60Hz	42.5 to 69Hz	42.5 to 69Hz	$\pm 0.1\text{Hz}$
Single-Phase RMS Voltages	10 to 1000Vrms	10 to 1000Vrms	$0.1\text{V} \pm 0.2\% \text{Rdg} \pm 0.2\text{V}$
Phase-to-Phase RMS Voltages	17 to 1700Vrms	17 to 1000Vrms	$0.1 \text{ to } 1\text{V} \pm 0.2\% \text{Rdg} \pm 0.4\text{V}$
400Hz	340 to 460Hz	340 to 460Hz	-
Single-Phase RMS Voltages	10 to 600Vrms	10 to 600Vrms	$0.1\text{V} \pm 1\% \text{Rdg} \pm 1\text{V}$
Phase-to-Phase RMS Voltages	17 to 1200Vrms	17 to 600V	$0.1 \text{ to } 1\text{V} \pm 1\% \text{Rdg} \pm 1\text{V}$
DC	100 to 1000V	10 to 1000V	$0.1\text{V} \pm 1\% \text{Rdg} \pm 3\text{V}$ (typical)
PT Ratios	Programmable from 50 to 650,000V	-	0.01 to 0.1V
CURRENT MEASUREMENT	A193***	196A***	
Nominal range for current probes supplied with kit. See chart on pg 11 for other probes	200mA to 3000Arms	200mA to 10,000A	-
CT Ratios	Programmable from 1:1 to 25,000:1 (probe dependent)		
POWER MEASUREMENTS	RANGE	RESOLUTION	
Active Power (P)* $E = 10^{18}$	-2 to 2GW	0.001W	$\pm 0.5\% \text{Rdg} \pm 0.005\% \text{Pnom}$
Reactive Power (Q)*	-2 to 2Gvar	0.001var	$\pm 1\% \text{Rdg} \pm 0.01\% \text{Qnom}$
Apparent Power (S)*	0 to 2GVA	0.001VA	$\pm 0.5\% \text{Rdg} \pm 0.005\% \text{Snom}$
Power Factor	-1 to +1	0.001	± 0.05
Tangent ϕ (active/reactive power ratio)	-3.2 to +3.2	0.001	± 0.02
ENERGY MEASUREMENTS			
Active Energy (EP)	0 to 4×10^7 ; 4Ewh	1Wh	$\pm 0.5\% \text{Rdg}$
Reactive Energy (EQ)	0 to 4×10^7 ; 4Evarh	1varh	$\pm 2\% \text{Rdg}$
Apparent Energy (ES)	0 to 4×10^7 ; 4EVAh	1Vah	$\pm 0.5\% \text{Rdg}$
THD	$\pm 655\%$		
Individual Harmonics	1 to 50 displayed in percentage; 1 to 7 at 400Hz		
External Supply	110V/250V (10%) @ 50/60Hz; 400Hz		
Power From Phase Measurement	PEL 102/103: requires optional Power to Phase Adapter Cat #2137.90 ; PEL 105: 100V to 1000V _{AC}		
Back-Up Power Source/Charge Time	Rechargeable 8.4V NiMH battery pack / Approximately 5 hours		
Battery Life	30 minutes minimum, 60 minutes typical		
MECHANICAL			
Communication Ports	USB 2.0, Ethernet (RJ45), Wireless Bluetooth Class 1 **/ PEL 105 only: Wi-Fi		
Dimension/Weight	PEL 102/103: 10.08 x 4.92 x 1.46" (256 x 125 x 37mm) / 2.20lbs (1kg); PEL 105: 10.6 x 7.1 x 9.65" (270 x 180 x 245mm) / 8.8lbs (4kg)		
Case	PEL 102/103: Double insulated, rubber over-molded, polycarbonate UL94 V1 rated / PEL 105: Polycarbonate UL94 V1 rated		
Mounting/Security	PEL 102/103: Kensington anti-theft system / Embedded magnets on back side, keyhole slot on back side		
DISPLAY			
Display Type	PEL 102/103: 2.63 x 2.16" (67 x 55mm), four line, monochrome, backlit LCD with adjustable brightness & contrast PEL 105: 4.2 x 3.3" (107 x 84mm), four line, monochrome, backlit LCD with adjustable brightness & contrast		
ENVIRONMENTAL / SAFETY			
Operating Temperature/Relative Humidity	PEL 102/103: 50° to 122°F (10° to 50°C) / 45 to 75%RH; PEL 105: -4° to 122°F (-20° to 50°C) / 45 to 75%RH		
Storage Temperature	PEL 102/103: -4° to 122°F (-20° to 50°C) with batteries; -4° to 158°F (-20° to 70°C without batteries) PEL 105: -40° to 95°F (-40° to 35°C from 0 to 95%RH); -40° to 158°F (-40° to 70°C from 0 to 75%RH)		
Safety Rating / CE Rating	PEL 102/103: Complies with IEC 61010-1:Ed3, and IEC 61010-2-030:Ed1 for 1000V CAT III / 600V CAT IV, Pollution Degree 2 / PEL 105: 1000V CAT IV, Pollution Degree 4 (closed) / Yes		
Index of Protection	PEL 102/103: IP54 non operating / PEL 105: IP67 with cover closed		

* Maximum value is current probe dependent. ** Computers with Class II Bluetooth will restrict range to 40 ft. Computers without Bluetooth will require a Class I or Class II Bluetooth radio adapter.

*** Maximum current reduced by a factor of 2 for 400Hz fundamental frequency.

▼ PEL 102 & PEL 103 FEATURES

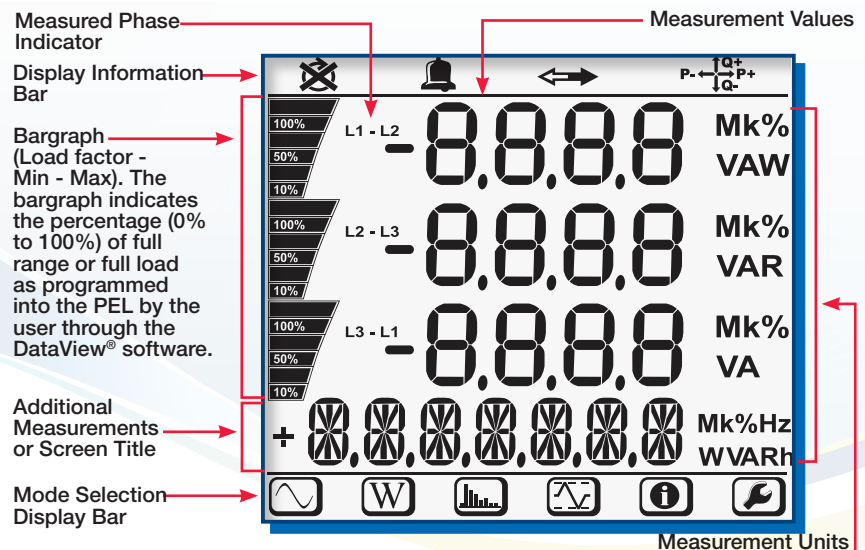


▼ PEL 103 & PEL 105 DISPLAY

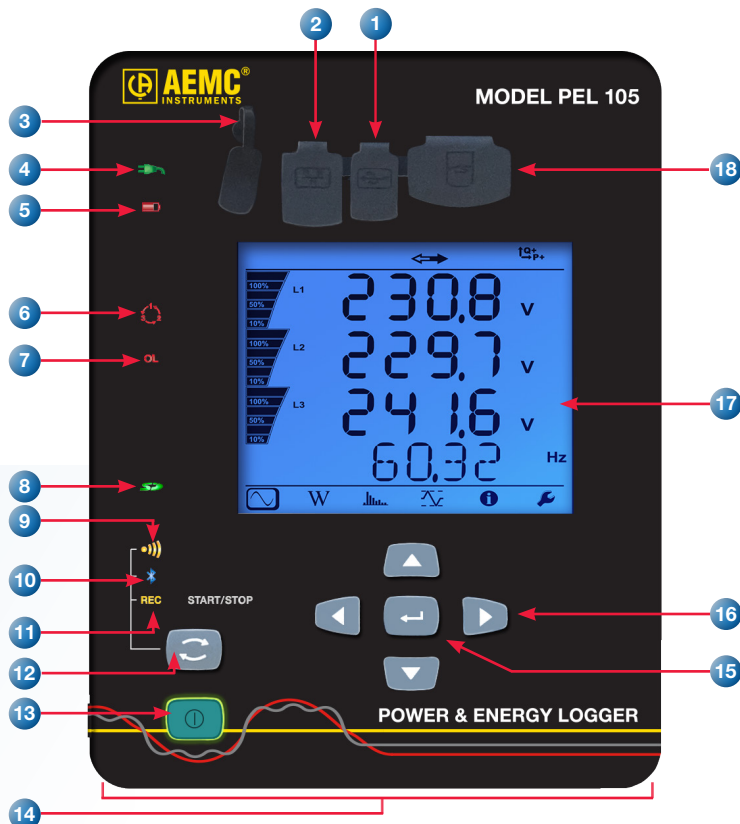
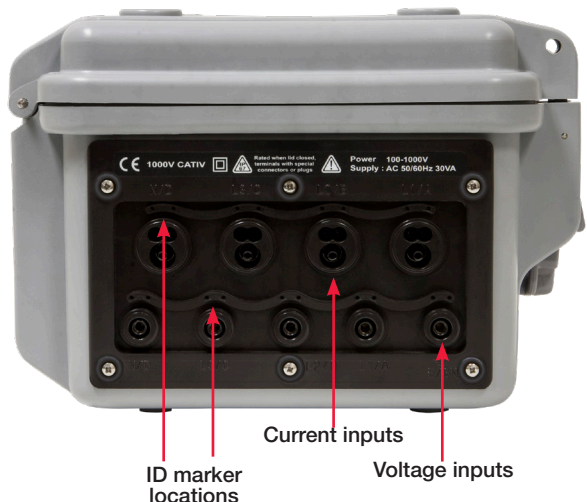
Information & Mode Selection Display Bar Indicators:

ICON	DESCRIPTION
	Phase Sequence reversal indicator or missing phase (displayed in 3-Phase distribution systems)
	ON - data available for recording OFF - non-display indicates possible internal problem
	Power Quadrant Indication
	Measurement Mode (Real Time values)
	Power and Energy Mode
	Harmonics Mode
	Min/Max Mode
	Information Mode
	Configuration Mode

KEY FEATURES OF THE PEL 103 & PEL 105 LCD DISPLAYS



▼ PEL 105 BUSINESS END



▼ PEL 105 FRONT PANEL

- | | |
|-----------------------------------|--|
| 1. USB port | 11. Recording LED |
| 2. Ethernet port | 12. Control button |
| 3. Power input | 13. Power button |
| 4. External Power Indicator | 14. Input terminals (not shown) |
| 5. Battery LED | 15. Enter button |
| 6. Phase Sequence Error Indicator | 16. Navigation buttons: Up, Down, Left & Right |
| 7. Overload LED | 17. LCD screen |
| 8. SD Card LED | 18. SD Card slot |
| 9. Wi-Fi LED | |
| 10. Bluetooth LED | |

▼ PEL 105 LED FEATURES

LED STATUS INDICATORS		
	4	External Power: When ON, indicates the instrument is currently running on AC external power. When OFF, indicates the instrument is running on battery or voltage terminal input power
	5	Battery: Glows steady yellow when the battery is actively charging. Glows yellow and blinks once per second when the battery is recovering from a full discharge. Glows red and blinks twice per second when the battery is low and there is no auxiliary power connected. When OFF, indicates the battery is fully charged.
	6	Phase Sequence: Phase sequence reversal indicator or missing phase blinks when the phase sequence (rotation) may be incorrect (displayed in 3-Phase distribution systems).
	7	Overload: Blinks when at least one input is overloaded, or when current inputs are mismatched.
	8	SD Card: Glows steady green when the SD card is present, recognized, and unlocked. Glows steady red when the SD card is (1) not present, (2) locked, or (3) present but not recognized. Glows red and blinks when the SD card is initializing. Blinks alternately red and green once per second when the SD card is full. Blinks dark orange once per second to indicate the SD card will be full before the end of the in-progress or pending recording.
	9	Wi-Fi: Glows steady when Wi-Fi is enabled but not currently transmitting. Blinks when Wi-Fi is enabled and transmitting. When OFF, Wi-Fi is disabled.
	10	Bluetooth: Glows steady when <i>Bluetooth</i> is enabled but not currently transmitting. Blinks when <i>Bluetooth</i> is enabled and transmitting. When OFF, <i>Bluetooth</i> is disabled.
	11	Recording: Blinks twice every 5 seconds when recording. Blinks once every 5 seconds when not recording.
	13	Power Button: Glows green when the instrument is running on voltage terminal input power, and blinks once per second when line voltage power is disabled.

▼ PEL 102 & PEL 103 MOUNTING



Models PEL 102 and PEL 103 can be mounted on a door or other object using the MultiFix mounting attachment, included.



Models PEL 102 and PEL 103 are equipped with four powerful magnets for mounting the instrument on a metallic surface.

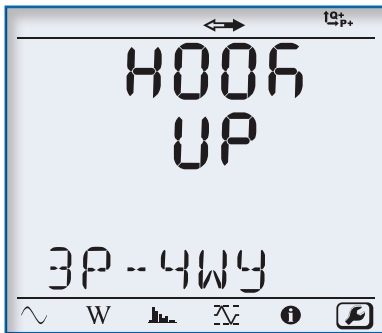


Models PEL 102 and PEL 103 easily mount in a panel with the cover in place.

← Compact side view of Models PEL 102 & PEL 103

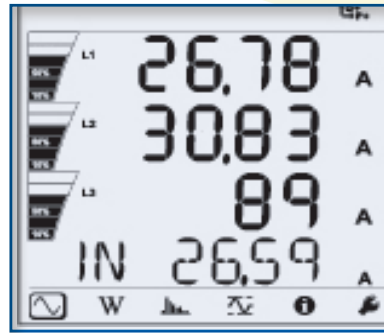
▼ LARGE FUNCTIONAL DISPLAYS

Configuration Mode



Hook up, voltage and current ratios and aggregation period can be configured from the front panel of the PEL 103 and PEL 105.

Measurement Mode

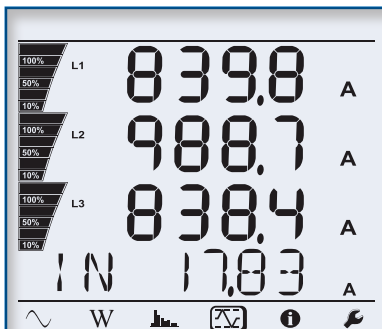


Real-time updates are displayed for voltage, current, power, frequency, power factor and tangent.



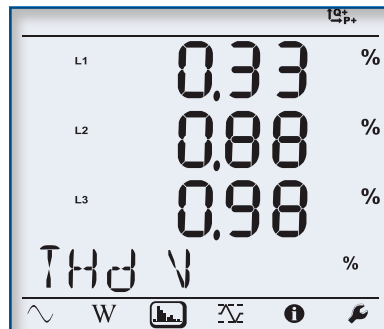
The backlit display on the Model PEL 103 can be read in dark areas showing the real-time measurements.

Max Mode



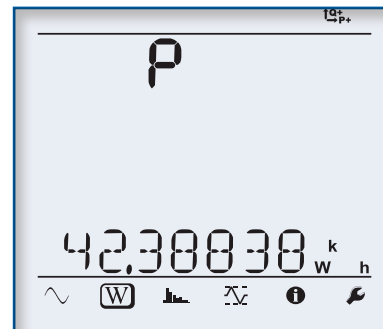
Max values for voltage, current (including neutral current), power and harmonics.

Harmonic Mode



Total Harmonic Distortion (THD) can be displayed by phase or phase to phase. Neutral current THD can also be displayed.

Power Mode

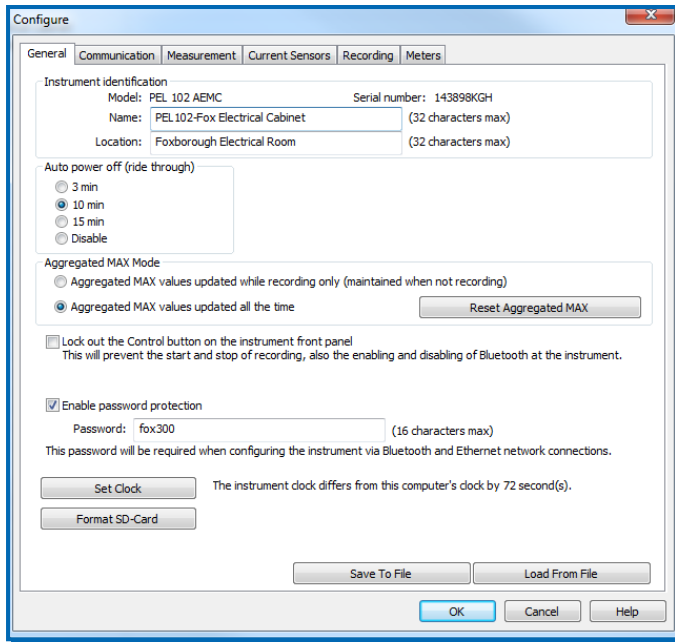


Real, apparent or reactive energy can be displayed along with its associated energy quadrant.

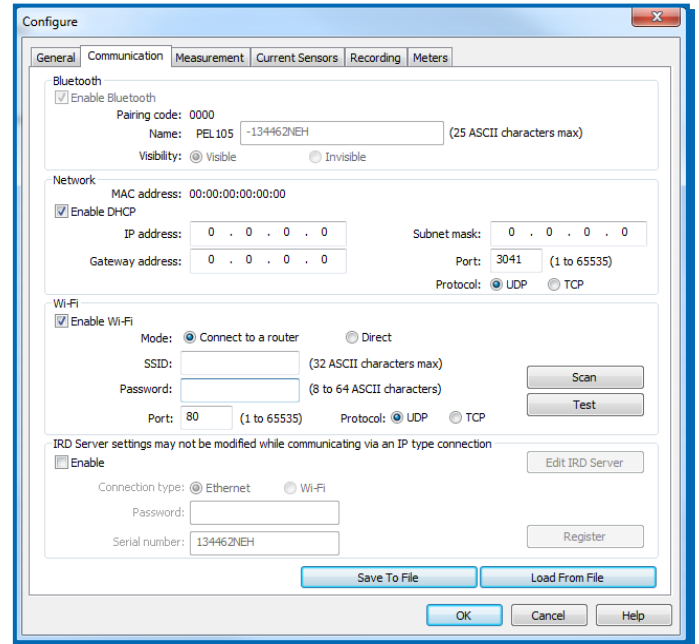


DataView®

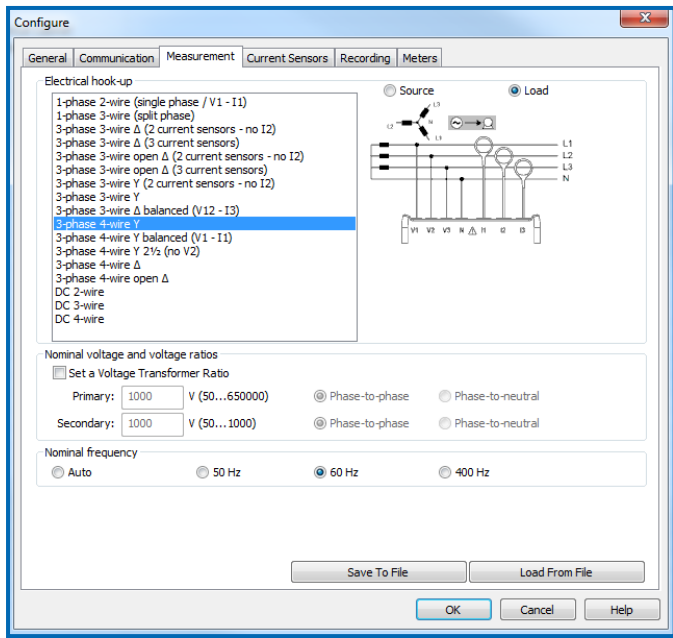
PEL 100 Series Data Analysis & Reporting Software



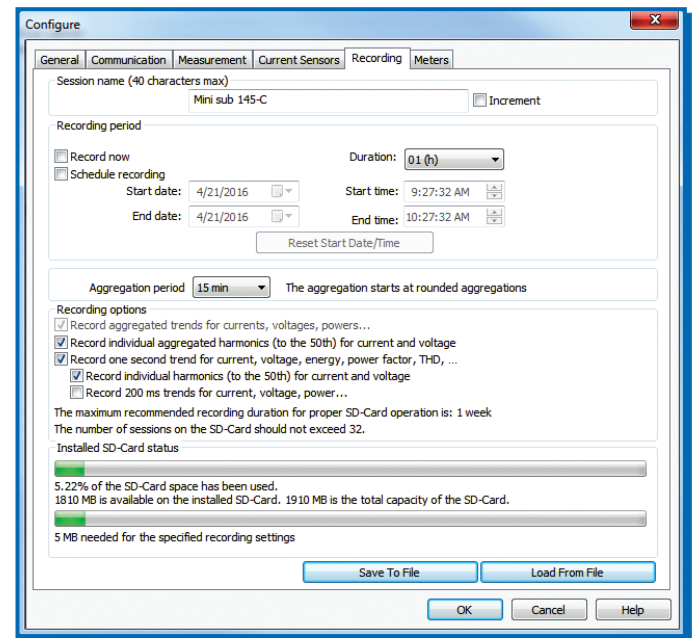
Basic information regarding Auto Power Off, instrument name and location, display brightness and contrast (Model PEL 103 and PEL 105), setting of the real-time clock and SD-card formatting is easily accomplished from the General tab.



The Communication tab provides information about the various communication mediums supported by the instrument with clear and easy setup of all functions from one dialog box.



The Measurement tab specifies the electrical distribution system, voltage ratios, nominal frequency and current probe options and ratios.



In the Recording tab, configure the instrument to measure (and record) over a user selectable recording period from a few hours to a month or longer. Select demand intervals from one to sixty minutes and view available memory for data storage.

DataView®



DataView® software provides a convenient way to configure and control power and energy tests from a computer. Through the use of clear and easy-to-use tabbed dialog boxes, all PEL 100 series functions can be configured and tests can be initiated.

Configure all functions of the PEL

- Display and analyze real-time data on your PC
- Configure functions and parameters from your PC
- Customize views, templates and reports to your exact needs
- Create and store a complete library of configurations that can be uploaded as needed
- Zoom in and out and pan through sections of the graph to analyze the data
- Download, display and analyze recorded data
- Display waveforms, trend graphs, harmonic spectrums, text summaries, event logs and stored alarms
- Print reports using standard or custom templates you design
- Free updates are available on our website www.aemc.com

Reports can be displayed on a PC and printed. Each report includes all test results in a tabular and graphic format, as well as operator and test site information. Comments typed by the operator will also be included.

▼ TYPICAL DATAVIEW® FUNCTIONAL, DIGITAL & GRAPHICAL DISPLAYS

Control Panel Trend View

The screenshot shows the PEL Control Panel software interface. It features a title bar at the top, a tools menu bar below it, and a parameter selection buttons area. The main display area is divided into a tabular listing of data at the cursor position and a data plot/listing area. A movable cursor is visible on the graph. A logger navigation tree is located on the left side of the interface.

Channel	Color	Cursor MIN	Cursor AVG	Cursor MAX	Window MIN	Window AVG	Window MAX
V1	Red	219.6 V	219.6 V	219.6 V	216.8 V	219.4 V	220.9 V
V2	Green	234.6 V	234.6 V	234.6 V	231.4 V	234.3 V	235.7 V
V3	Blue	210 V	210 V	210 V	207.2 V	209.8 V	211.4 V
V12	Yellow	404.1 V	404.1 V	404.1 V	398.8 V	402.6 V	404.6 V
V23	Purple	389.1 V	389.1 V	389.1 V	383.7 V	388.5 V	389.5 V
V31	Orange	356.5 V	356.5 V	356.5 V	351.8 V	356.1 V	356.9 V

In the PEL Control Panel you will find all the necessary tools and selection buttons to review recorded data as trend plots or tabular lists. Also logger selection, when multiple loggers are detected, is accomplished in the Control Panel.

CURRENT PROBES & SENSORS

For Use With the PEL 100 Series

POWER & ENERGY LOGGERS



SENSOR TYPE		CURRENT RANGE		ACCURACY (TYPICAL)	TYPICAL ERROR ON Φ AT 50/60HZ	MAX CONDUCTOR SIZE	USED WITH MODEL	CATALOG # AND DESCRIPTION
MiniFlex® MA193 *   10" or 14" Sensor	200mA to 3000Aac	±1%	0°	2.75" (70mm)	PEL 102 PEL 103 PEL 105	MiniFlex® Sensor 10" MA193-10-BK Cat #2140.48 MiniFlex® Sensor 14" MA193-14-BK Cat #2140.50		
MR193   Battery operated	1 to 1000Aac 1 to 1300Aac	±2.5%	-0.80°	1.6" (41mm)	PEL 102 PEL 103 PEL 105	AC Current Probe MR193-BK Cat #2140.28		
SR193  	1 to 1200Aac	±0.3%	+0.2°	2.05" (52mm)	PEL 102 PEL 103 PEL 105	AC Current Probe SR193-BK Cat #2140.33		
AmpFlex® 193 *   24" or 36" Sensor	200mA to 12,000Aac	±1%	0°	7.64" (190mm) or 11.46" (290mm)	PEL 102 PEL 103 PEL 105	AmpFlex® Sensor 24" 193-24-BK Cat #2140.34 AmpFlex® Sensor 36" 193-36-BK Cat #2140.35		
MN93  	0.5 to 240Aac	±1%	+0.8°	0.78" (20mm)	PEL 102 PEL 103 PEL 105	AC Current Probe MN93-BK Cat #2140.32		
MN193  	100A 10mA to 120Aac	±1%	+0.75°	0.78" (20mm)	PEL 102 PEL 103 PEL 105	AC Current Probe MN193-BK Cat #2140.36		
	5A 5mA to 6Aac	±1%	+1.7°					
SL261 **   Battery operated	100A 5 to 100Aac/dc	±4%	±0.5°	0.46" (11.8mm)	PEL 102 PEL 103 PEL 105	AC/DC Current Probe SL261 Cat #1201.51		
	10A 50mA to 10Aac/dc	±3%	±1°					
J93   Battery operated	50 to 3500Aac 50 to 5000Aac	±1%	±1°	2.83" (72mm) Busbar: 5 x 1.69" (127 x 43mm)	PEL 102 PEL 103 PEL 105	AC/DC Current Probe J93-BK Cat #2140.49		
196A-24   Waterproof 24" Sensor	200mA to 10,000A	±2%	0°	7.64" (190mm)	PEL 105	AmpFlex® Sensor 24" 196A-24-BK Cat #2140.75		

* Maximum current reduced by a factor of 2 for 400Hz fundamental frequency.

Note: Refer to the instrument's user manual for complete specifications.



**AC/DC Current Probe BNC Adapter for Model SL261 only
Catalog #2140.40

United States & Canada

**Chauvin Arnoux®, Inc.
d.b.a. AEMC® Instruments**

15 Faraday Drive
Dover, NH 03820 USA

Tel (508) 698-2115

Fax (508) 698-2118

Customer Support

Place orders, obtain prices
and delivery options

(800) 343-1391

customerservice@aemc.com

Sales & Marketing Department

sales@aemc.com

marketing@aemc.com

United States & Canada (continued)

Repair & Calibration Service

repair@aemc.com

**Technical & Product
Application Support**

(800) 343-1391

techinfo@aemc.com

**South America, Central America,
Mexico & the Caribbean**

Chauvin Arnoux®, Inc.

d.b.a. AEMC® Instruments

15 Faraday Drive
Dover, NH 03820 USA

export@aemc.com

Australia & New Zealand

Chauvin Arnoux®, Inc.

d.b.a. AEMC® Instruments

15 Faraday Drive
Dover, NH 03820 USA

export@aemc.com

All other countries

Chauvin Arnoux®

190, rue Championnet
75876 Paris Cedex 18, France

Tel 33 1 44 85 45 28

Fax 33 1 46 27 73 89

info@chauvin-arnoux.com

www.chauvin-arnoux.com

**TEST & MEASUREMENT
INSTRUMENTS**

VOLUME 23

WWW.AEMC.COM
TECHNICAL HOTLINE: (800) 343-1391

**OVER 130 YEARS DEVELOPING ELECTRICAL
TEST AND MEASUREMENT INSTRUMENTS**

**AEMC
INSTRUMENTS**
CHAUVIN ARNOUX GROUP

- Cable Testers
- Clamp-On Meters
- Current Measurement Probes
- Data Loggers
- Digital Multimeters
- Electrical Test Tools
- Environmental Testers
- Ground Resistance Testers
- Leakage Current Meters & Probes
- Megohmmeters
- Mini-Oscilloscopes
- Power Quality / Energy Analyzers, Meters & Loggers
- Test and Measurement (Lab) Instruments
- Thermal Imaging Cameras
- Transformer Ratio Meters

GROUND RESISTANCE TESTERS
For all of your Ground Integrity Testing needs...

Whether you are using a 1000V or 250V, 2 pole, 3 or 4 Pole Earth Resistance Tester, a soil resistivity meter or a pinch method test, AEMC has the right quantity for you. Our Professional Quality 20 Ground Resistance Testers will save you both time and money.

Whether AEMC's ground tester 1000V or 250V you can count on it to be the highest quality, the most complete package and the easiest to learn to use.

Our products are backed by over 130 years of experience in test and measurement equipment, and encompass the latest international standards for quality and safety.

Technical Hotline: (800) 343-1391
www.aemc.com

**AEMC
INSTRUMENTS**
CHAUVIN ARNOUX GROUP

POWER QUALITY
For All Your Power Quality Needs

A Family of Power Quality Analyzers, Loggers & Meters

We offer an extensive range of portable power quality analyzers, loggers and meters for various applications like electrical monitoring, harmonic detection, utility testing, power factor, power quality and measurement, troubleshooting and more.

Our software features allow you to configure all instrument functions, display measurements, collect trends, and store real-time test reports along with comments and analysis.

Our products are backed by over 130 years of experience in test and measurement equipment, and encompass the latest international standards for quality and safety.

Technical Hotline: (800) 343-1391
www.aemc.com

**AEMC
INSTRUMENTS**
CHAUVIN ARNOUX GROUP

MEGOhmmeters
For all of your Insulation Testing needs...

The safety of high-voltage electrical systems is critical. AEMC offers a full line of megohmmeters with test voltage from 50V to 250V, model dependent. Capable of measuring insulation resistance from 1000Ω to 200TΩ (200,000,000,000Ω) these rugged, rugged megohmmeters are accurate, reliable and built to perform under all conditions and have years of trouble-free service.

Our products are backed by over 130 years of experience in test and measurement equipment, and encompass the latest international standards for quality and safety.

Technical Hotline: (800) 343-1391
www.aemc.com

**AEMC
INSTRUMENTS**
CHAUVIN ARNOUX GROUP

FAMILY of PRODUCTS

To learn more or contact us visit our website: www.aemc.com

Call the AEMC® Instruments Technical Assistance Hotline for immediate consultation with an applications engineer: (800) 343-1391

AEMC® Instruments • 15 Faraday Dr. • Dover, NH 03820 USA • (800) 343-1391 • Fax (603) 742-2346 • E-mail: sales@aemc.com
Export Department: +1 (603) 749-6434 x520 • Fax +1 (603) 740-7550 • E-mail: export@aemc.com

950.BR-PEL100Series_1223 • Printed in the USA

© 2023 Chauvin Arnoux®, Inc. d.b.a. AEMC® Instruments